

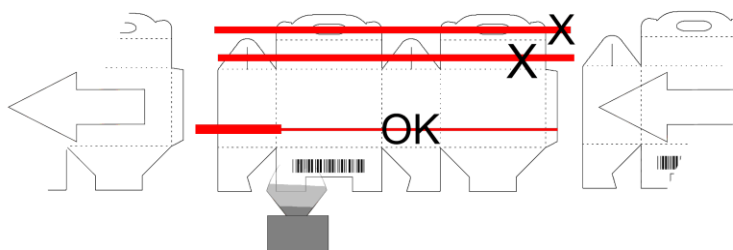
- 1 – Logo indicator, fade in slowly while there is not a learned barcode in memory. The logo indicator will be steady blue after a successful Teach procedure.
- 2- Check / valid barcode. Will flash Green after a valid read and match.
- 3- Trigger signal. Will lit blue when the trigger signal is ON.
- 4- Learned indicator. Will be green when a barcode is in memory and supervision is active and running.
- 5- Stop indicator. Will flash RED after a mismatch or missing reading.
- 6- Push Button. Used for Teaching or resetting after a barcode error.

3.1 Learning / Teaching a barcode to be supervised.

- 1) Arrange to have the desired barcode in front of the scanner head,
- 2) Press the front button (6) and hold it down for 3 seconds, the trigger icon will lit blue and go off at the end of the delay. Now, as soon as the button is released the scanner will read the barcode. If the scan is good it will flash the check (2) green 3 times and the “Learned” icon (5) will be green (meaning successful procedure).
- 3) If “Learned” (4) icon remain off, you need to redo the procedure from step 1

3.1.1 Setting the trigger detector

The trigger detector shall be installed so that it is ON before the arrival of the barcode in front of the scanner head and still ON after the passage of the barcode. Avoid placing the sensor beam across a section that have flaps or holes because misreading will occur.



3.1.2 Resetting after an error

When an error occurs, the folder is stopped. Restart can only happen by pressing the front button briefly (too long and you will enter Teach/Learn).